

# PRACE Peer Review – Access to PRACE systems

Ana Bela Dias (NCF)

In collaboration with Susie Douglas (EPSRC)

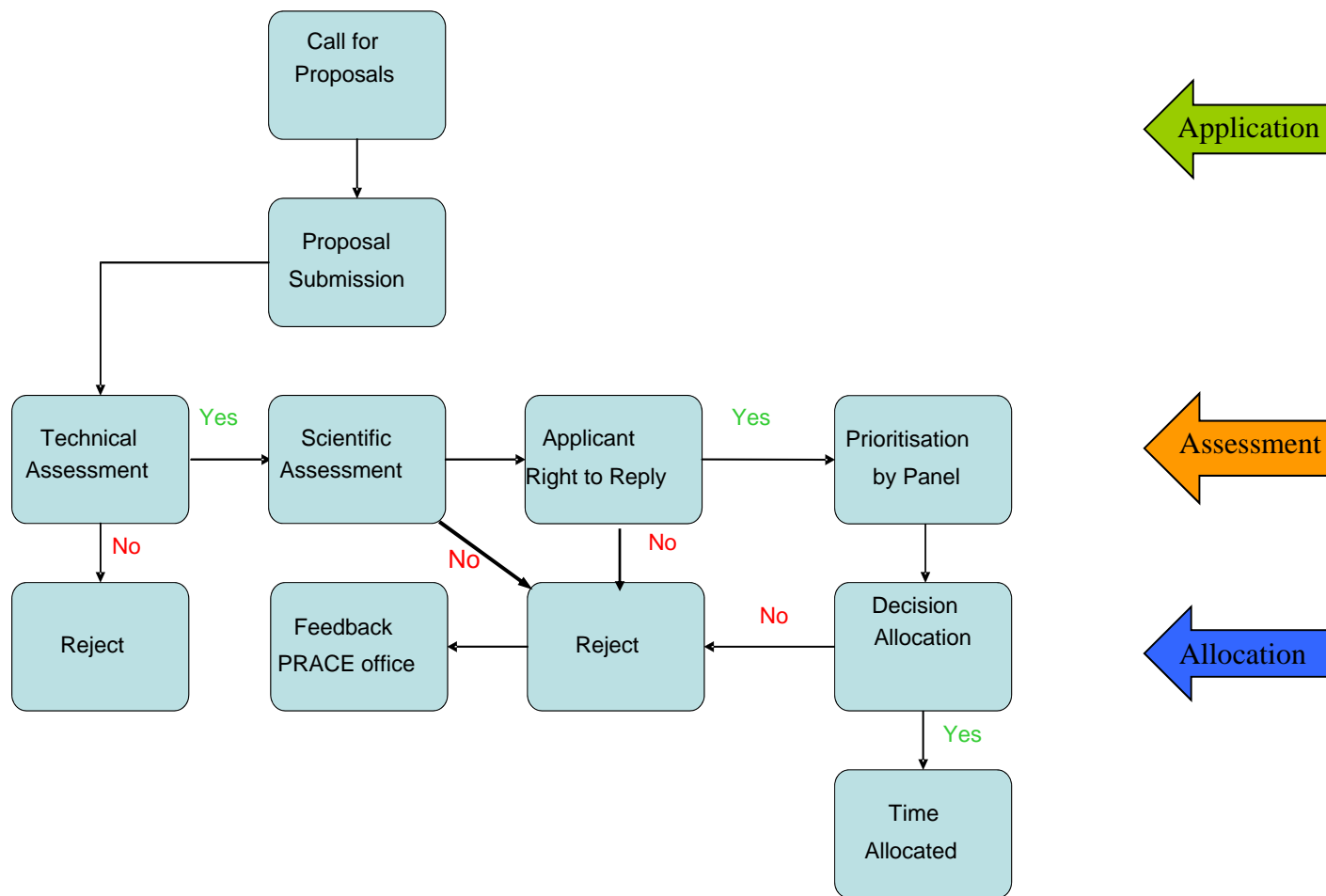
# PRACE Peer Review

Peer review will underpin the entire PRACE RI model

## Peer review principles

- ❖ Transparency
- ❖ Expert assessment
- ❖ Confidentiality
- ❖ Right to reply (reviewers comments and final decision appeal)
- ❖ Prioritisation
- ❖ Managing interests
- ❖ No parallel assessment
- ❖ Ensure fairness to the science proposed

# Peer review process



## Application

- ❖ Fully on-line application form
- ❖ Applicants can build up their application on-line before final submission

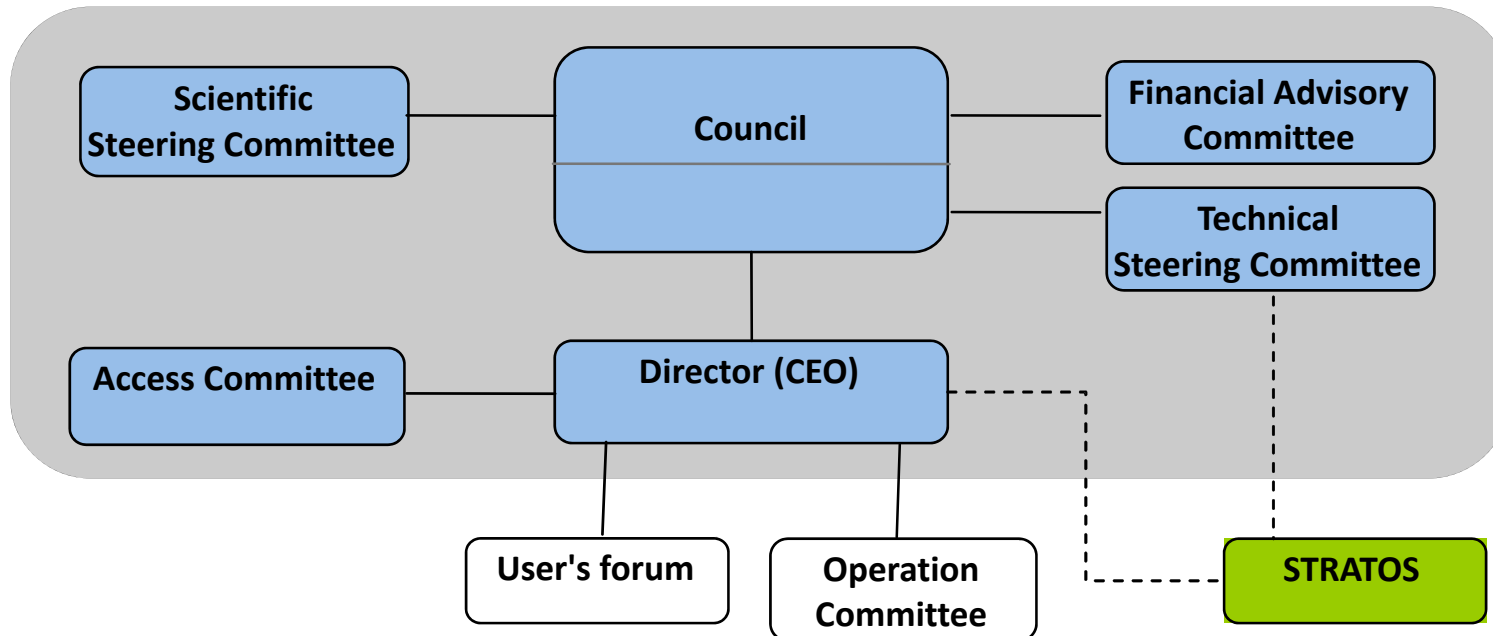
## Assessment

- ❖ Technical assessment by experts
- ❖ Only proposals with positive technical assessment undergo scientific assessment by experts
- ❖ Applicants have the right to reply to the experts' reports
- ❖ Prioritisation of proposals by Prioritisation Panel

## Allocation

- ❖ Allocation according to Prioritisation list
- ❖ Possible cut-off in prioritisation list
- ❖ Publication of abstracts of granted projects at PRACE website, except for confidential projects
- ❖ Applicants must submit a report at the end of the project (mandatory)

# PRACE Governance Structure



## Scientific Steering Committee

- ❖ Internationally recognised researchers
- ❖ General peer review policy
- ❖ Directives for opening calls
- ❖ Selection of prioritisation Panels

## Prioritisation Panel (Access Committee)

- ❖ Internationally recognised researchers
- ❖ Analysis of technical and scientific reports
- ❖ Analysis of applicants replies to technical and scientific assessments
- ❖ Prioritisation of proposals
- ❖ Possible decision on cut-off threshold for granting of proposals

## Types of proposals

- ❖ Preparatory access (code testing, optimisation and development) – **only technical peer review; support of software experts if necessary; maximum 6 months allocation**
- ❖ Project access – **both technical and scientific peer review; 1 year allocation**
- ❖ Programme access – **both technical and scientific peer review; 2 years allocation**

## Preparatory access proposals

- ❖ Code testing, optimisation and development
- ❖ Continuous calls
- ❖ Fast track assessment (~1 month)
- ❖ Only technical peer review by Technical Committee including hosting centre representatives
- ❖ Applicants have the right to comment on the reviewers remarks
- ❖ Council ratifies the granting decisions
- ❖ The Director informs (in writing) the applicants of the computing grants, on behalf of the Council
- ❖ Applicants have the right to appeal to a decision of the Council; formal procedure to handle such appeals

## Project and programme proposals

- ❖ Technical peer review (system and code suitability) by Technical Committee including hosting centre representatives
- ❖ Scientific peer review by at least 3 external reviewers
- ❖ Applicants have the right to comment on the reviewers' remarks; these remarks are sent together with the reviewers' comments to the (prioritisation) panel
- ❖ Formally the Council ratifies the prioritisation list
- ❖ The Director informs (in writing) the applicants of the computing grants, on behalf of the Council
- ❖ Applicants have the right to appeal to a decision of the Council; formal procedure to handle such appeals

## **Fully operational, secure on-line application system (CINES – France)**

- ❖ Fully electronic submission
- ❖ Automatic rejection of post-deadline and incomplete applications
- ❖ On-line peer review (including reviewers' reports and applicant's reply)
- ❖ Track application status (PRACE staff and applicant)
- ❖ Electronic submission of reviewers' reports

## Reviewer database linked to on-line system (CINES – France)

- ❖ Technical peer reviewers from Tier-0 centres + software experts (all proposals)
- ❖ External scientific peer reviewers (project and programme proposals)
- ❖ Selected reviewers to be automatically linked to each proposal
- ❖ Reviewers fill in the report on the PRACE on-line system

## **PRACE website dedicated to peer review (CSC - Finland)**

- ❖ General information about PRACE peer review
- ❖ Description of the various PRACE systems
- ❖ Call announcement
- ❖ Subscription to call alerts
- ❖ Eligibility
- ❖ Application information
- ❖ User agreement and general conditions for usage
- ❖ Link to on-line application system

## PRACE Early access call

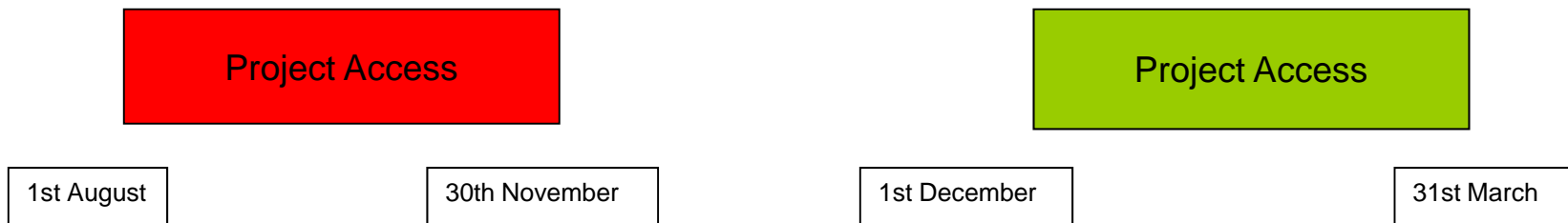
- ❖ Initial call for a reduced number of large projects
- ❖ Highly relevant scientific projects, mature enough to be able to achieve publishable results in a short allocation period
- ❖ 1 call with two allocation periods of 4 months each
- ❖ First allocation period from 1st August to 30th November
- ❖ Second allocation period from 1st December to 31st March
- ❖ Projects in second allocation period may request technical support (preparatory access) in the first allocation period
- ❖ Only proposals from academia and where the organisation of the project leader is homed in a European Union or a PRACE initiative country are eligible

**Remark:** Final report mandatory for all types of proposals

## PRACE Early Access Call

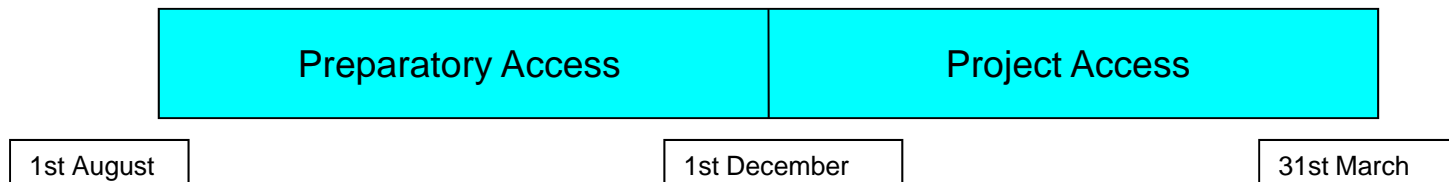
- ❖ Opening date : 10th May 2010
- ❖ Closing date : 10th June 2010
- ❖ Start date : 1st August or 1st December 2010
- ❖ Allocation period : 4 months
- ❖ Type of access: Project (1 proposal) or Preparatory + Project (combined - 2 linked proposals)
- ❖ Machine(s) available: JUGENE BlueGene/P (Jülich, Germany)
- ❖ Information: <http://www.prace-project.eu/hpc-access>

# Project access



- ❖ Two allocation periods of 4 months each
- ❖ Start date EITHER 1st August OR 1st December
- ❖ Applicant must choose the allocation start date, PRACE has the final decision

## Combined proposal



- ❖ Preparatory access only for improving code performance
- ❖ Preparatory access must be always followed by project access

## Machines available

- ❖ JUGENE IBM BlueGene/P – FZJ, Jülich, Germany:

[http://www.fz-juelich.de/jsc/service/sco\\_ibmBGP](http://www.fz-juelich.de/jsc/service/sco_ibmBGP)

Storage capacity:

<http://www.fz-juelich.de/jsc/jump/usage/FAQ/data-limits>

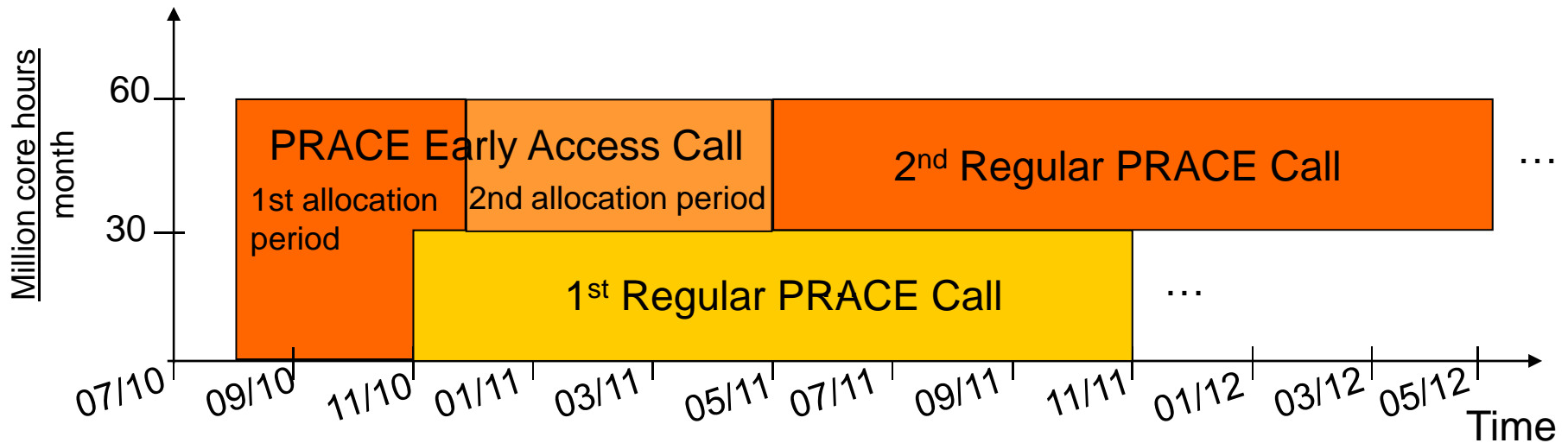
- ❖ Next machine available – GENCI, France  
Summer 2011

## PRACE regular calls

- ❖ Preparatory access – code testing and optimisation, technical support if requested, continuous call, fast track assessment, maximum allocation of 6 months
- ❖ Project access – 2 calls per year, 1 year allocation, allocation in November and May
- ❖ Programme access – large projects of a research group, 2 years allocation, calls coincide with the calls for project access, possible review at the end of the first year allocation

**Remark:** Final report mandatory for all types of proposals

## PRACE calls – JUGENE – Jülich



## Summary

- ❖ PRACE early access call open until 10th June
- ❖ 1st PRACE regular call opens 15th June for allocation starting 1st November
- ❖ Only available machine at present is JUGENE
- ❖ All proposals will be subject to PRACE peer review, which will be handled on-line
- ❖ The Scientific Steering Committee will be responsible for advising on the scientific direction of PRACE