



DEISA Training Session, CSC Espoo 31st May 2007

DESHL Exercises

1 Prerequisites

- The DESHL Client is a Java Application that requires Java Run Time Environment version 1.5 to be installed. The DESHL client has been tested with the SUN Java Runtime Environment.

Check which version of Java is installed on your computer

On MS Windows type `java -version` in a command window

On UNIX/Linux type `java -version` in a console window

If the execution of the command fails or if you have a java version older than 1.5, then go to the SUN web page to download and install the latest release on your local workstation.

- To use the DESHL client, you will need a valid certificate in .p12 format, and the root certification authority certificate in .pem format. For more information on certificates please see Appendix I, at the end of this document.
- You will also need to download the CA certificate for each of the DEISA gateways. These are available at <http://winnetou.matrix.sara.nl/deisa/certs/unicerts.tar.gz>, this must be unpacked into the directory containing your user certificate.

2 Installation

The following steps are required to install and configure the DESHL v4.0 client:

1. **Download the installer**
2. **Install and configure the DESHL**
3. **Verify the settings**

2.1 *Download the installer*

Download the latest DESHL installer from the JRA7 project site:

<http://forge.nesc.ac.uk/download.php/152/DESHL-4.0-RC3-installer.jar>

Either save it or execute it directly if your browser supports execution of jar files.

2.2 *Install and configure the DESHL via the installer GUI*

Run the GUI installer

If the installer did not immediately run in the previous step then run it now:

In a file explorer window double click on the installer jar file to start the installation. Alternatively, to install from the command line on UNIX:

```
$ java -jar DESHL-4.0-RC3-installer.jar
```

Alternatively, to install from the command line on Windows open a DOS command window and run the following:

```
C:\>java -jar DESHL-4.0-RC3-installer.jar
```

If problems are experienced when running the installer, extra debug information can be obtained by running with these additional arguments:

```
$ java -DTRACE=true -DSTACKTRACE=true -jar DESHL-4.0installer.jar
```

Configure the DESHL using the GUI installer

The graphical installer opens up with a welcome screen for DEISA JRA7 followed by a license agreement. The user is then requested to accept the license agreement before being allowed to install DESHL.

When prompted for an installation path, enter the following if installing on Windows:

```
C:\Program Files\DESHL-4.0
```

If installing on UNIX, specify a DESHL-4.0 directory in your local workstation home directory, for example:

```
/home/malcolm/DESHL-4.0
```

Next choose the packages to install as shown in Figure 1

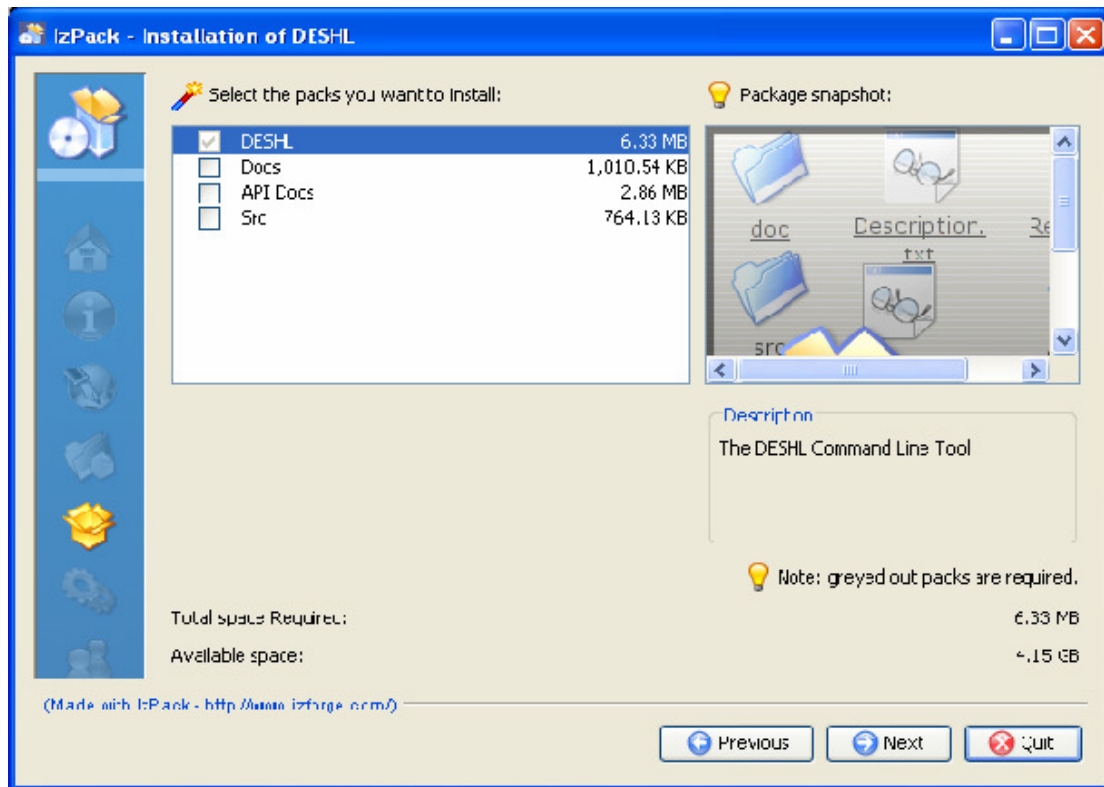


Figure 1: DESHL Package selection.

The base DESHL package is always required and cannot be deselected. Additional material can be selected or deselected for installation. The packages are:

- Docs – manuals for DESHL including the user manual and design document.
- API Docs – the Javadocs for the DESHL code.
- Src – the Java source for DESHL.

The next window, see Figure 2, shows how to configure one UNICORE NJS that can be used to interact with the DESHL infrastructure.

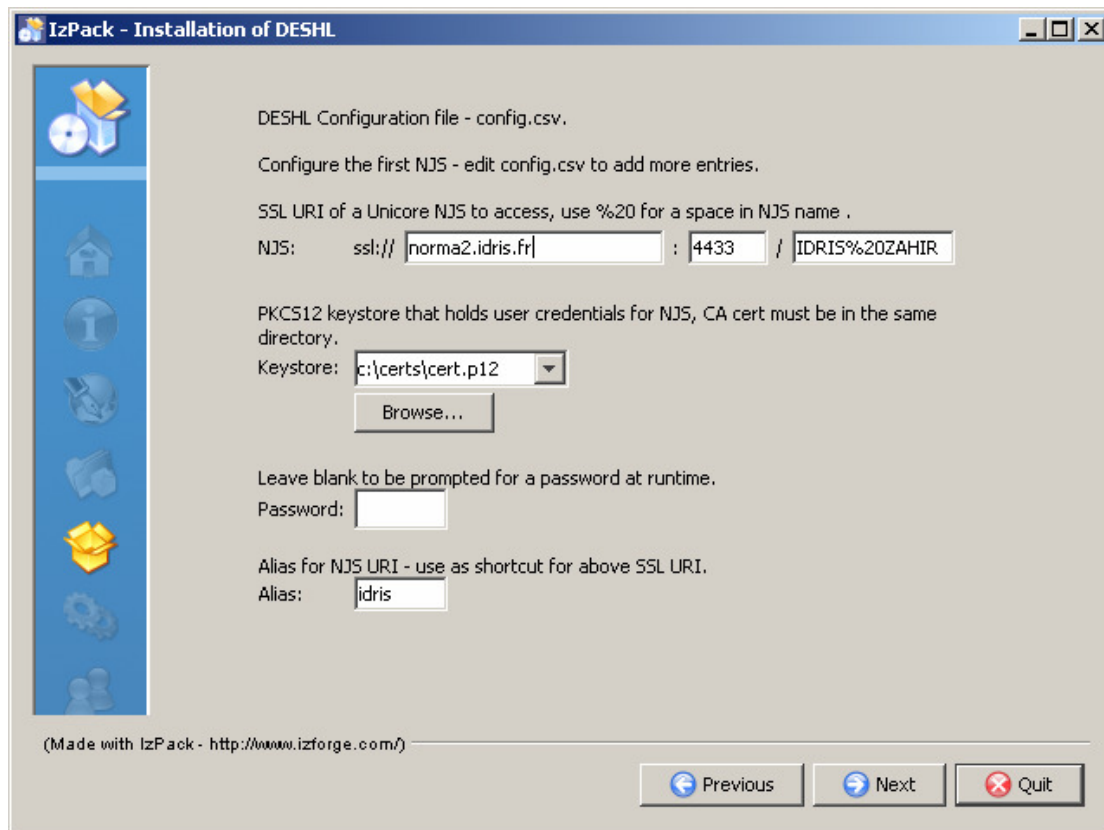


Figure 2: UNICORE NJS details.

The following information is expected (obtainable from the appropriate local site administration):

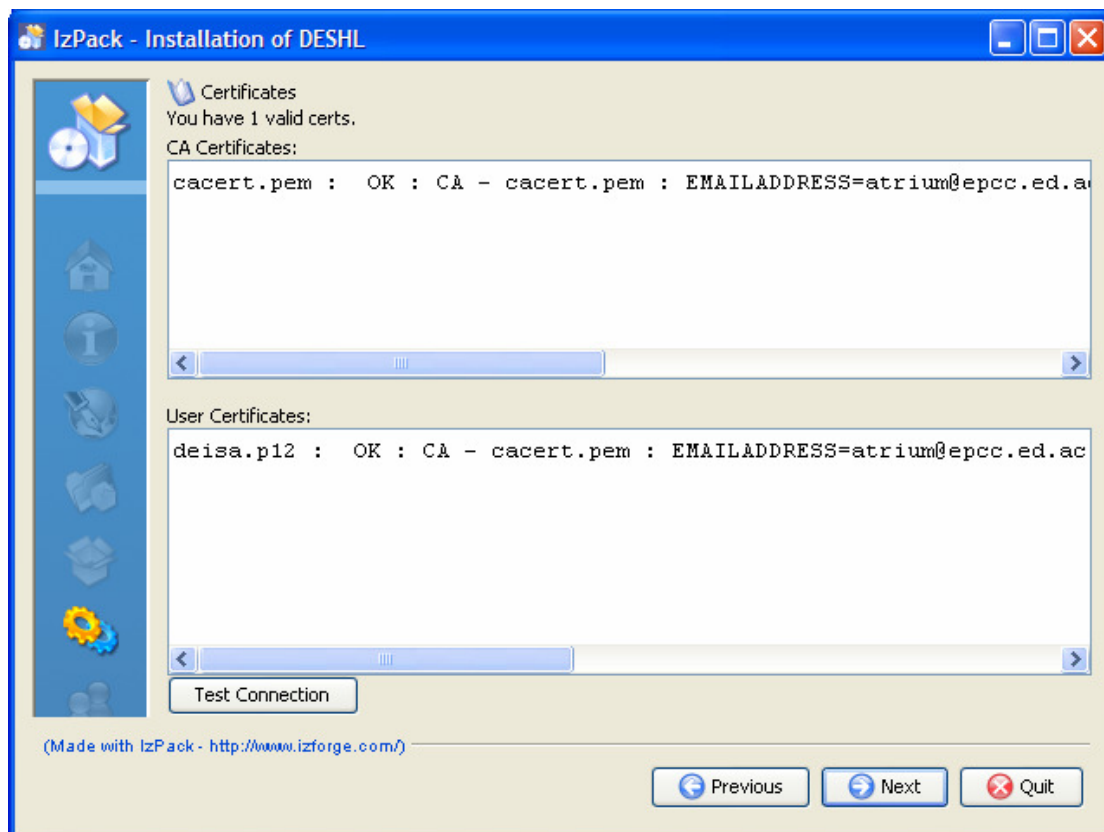
- The UNICORE NJS URI, this consists of:
 - The address and port of the UNICORE Gateway for that NJS
 - The name of the NJS (note that “%20” must be used instead of any spaces in the name)
- Use the ‘Browse’ button to navigate to the PKCS12 file that holds the user credentials. The directory in which this file resides must also contain the CA certificate for the issuer of the credential, in ‘.pem’ format.
- If the password for the PKCS12 file is supplied here it is added to the configuration file in plaintext. This allows DESHL to access the PKCS12 keystore without prompting the user at every command. This file has user read only permissions on UNIX. Alternatively, this may be left blank and the DESHL client will ask for the password to be entered every time that it is required. For the purposes of the hands-on session, please leave this blank.
- An alias for the NJS URI. Define a shortcut for the NJS URI when using data staging and job management commands, this will make using the DESHL much easier than typing long path names. For example, “idris”, “fzj”, etc. The alias must not contain any spaces.

It should be possible to access any DEISA site from any DEISA gateway; however it is strongly recommended that you configure the DESHL client to always use your home site’s gateway. A list of the current DEISA gateways is shown in the table below:

Sitename	Gateway Address	NJS name	Port
FZJ	zam177.zam.kfa-juelich.de	FZJ%20JUMP	4000
CINECA	fe04-ext.fec.cineca.it	CINECA-SP5	4433
RZG	unigate.rzg.mpg.de	RZG%20SP4	4433
SARA	uni-gw1.sara.nl	SARA%20ASTER	4004
IDRIS	norma2.idris.fr	IDRIS%20ZAHIR	4433
CSC	uni.csc.fi	CSC	4000
BSC	opsuni01.bsc.es	BSC%20Marenostrum	4433
LRZ	unicore.lrz.muenchen.de	LRZ%20HLRB%20II	4433
EPCC	admin.hpcx.ac.uk	EPCC%20HPCx	4433

(The BSC gateway will normally be accessible to those users who have BSC as their home site, but the supercomputer MareNostrum will not be available for the exercises nor during the DEISA Test User validity period. Please also note that IDRIS is unavailable for non-EU attendees.)

The installer attempts to validate and verify the supplied credentials in the following window.



If password was left blank in the previous screen then the installer will request the password so that the credentials can be validated – this password is NOT saved in the configuration. (If a password is not entered here, the installer will report the user certificate as invalid as it will not be able to unlock it without the password.) (Do not use the “Test Connection” button; this will be removed in a future version.)

Using this information, the installer installs all selected materials into the chosen directory. It also sets up the DESHL configuration file 'config.csv' with the details given for the NJS URI. (This configuration file can be manually edited after installation to change the settings, but this should not be necessary for the exercises.)

Once complete all the necessary files are installed and configured to allow the DESHL to be used with the chosen NJS.

The installer does not add the DESHL executable to the path – add this manually as follows:

In UNIX, from the DESHL install directory:

```
$ export PATH=$PWD/bin:$PATH
```

In Windows, if DESHL install directory is C:\deshl:

```
C:\deshl>set PATH=C:\deshl\bin;%path%
```

2.3 Verify the settings

A simple test to verify that the DESHL client is correctly installed and configured is to try to list the contents of the home storage at the configured site. For example:

```
$ desh1 list ssl://norma2.idris.fr:4433/IDRIS%20ZAHIR/home/
```

Or if using shortcuts:

```
$ desh1 list idris/home
```

For the site, the DESHL client should display a list of the files and directories in the top level of the HOME storage. (The HOME storage is the site-specific home directory for the user defined in the UNICORE incarnation database.)

2.4 Help System

The DESHL client contains a help option, `-h` or `--help`. This can be used to display the set of commands which are currently supported, and the options for a specific command.

```
$ deshl -h

[-h] command [command-options]
Where:
  -h,--help    Print this message.

With commands:
  fetch
  copy
  isDir
  move
  status
  jobs
  remove
  makeDir
  list
  submit
  sites
  terminate
  isFile
  exists

Run deshl <command> -h for individual command options.
```

3 Using the DESHL client

The following exercises assume that a shortcut to the configured site was specified during installation. For purposes of illustration, this will be assumed to be "idris", however you should substitute your own shortcut in the examples.

Script files which are copied to a DEISA site and then executed must be saved as ANSI Unix-compatible format before copying to the DEISA site. Note that neither Notepad nor Wordpad are suitable as these create files with carriage return and linefeed line delimiters that will not run correctly.

One possible editor is `emacs` available here:

<http://www.gnu.org/software/emacs/windows/faq2.html#where-precompiled>

Files are created as `dos` files but can be converted to `unix` format:

Press `ESC-X` then type
`set-buffer-file-coding-system <RET>`
then type
`unix <RET>`

3.1 Upload, submit and manage a simple job

Create a new directory on your local workstation and call it `exercises`

Go into this directory, and verify that the `deshl` executable has been correctly added to your path by running `deshl -h` from the command prompt.

In your `exercises` directory, create files called `hello-submit.sh` and `hello.sh`, and add the contents to the respective files as shown below:

`hello-submit.sh`

```
#!/bin/bash
# Test job script for DESHL using SAGA.
#
# SAGA JobDefinition based directives:
#$ SAGA_FileTransfer = file:///jobs/hello.sh#HOME > hello.sh
#$ SAGA_HostList = idris
#$ SAGA_JobCmd = hello.sh
```

`hello.sh`

```
#!/bin/bash
echo "Here I am on `hostname` in $PWD. Current date is `date`"
```

Please note that you must edit `hello-submit.sh` to specify the execution site:

```
#$ SAGA_HostList = idris
```

The `hello-submit.sh` file contains a set of SAGA directives for submitting and managing the execution of a job, the job in this case being the executable script, `hello.sh`.

The rest of this exercise will show you how to import the executable script to a DEISA site, and then use the SAGA script with the DESHL command line tool to submit the job and retrieve the output from the job.

The following steps will be performed:

1. Verify if a remote directory exists
2. Create a remote directory for the executable script
3. Upload the executable script to the
4. Edit the SAGA script
5. Submit the job
6. Get the job status
7. Cleanup the job and retrieve the job output

1. Verify if a remote directory exists

First we want to determine if the remote directory exists:

```
$ deshl exists idris/home/jobs
```

If the remote directory exists, the following message should be displayed:

```
exists: target idris/home/jobs exists
```

Otherwise, the following message is displayed:

```
exists: target idris/home/jobs does not exist
```

2. Create a remote directory for the script

If the remote directory does not exist, create it using the `deshl makeDir` command:

```
$ deshl makeDir idris/home/jobs
```

Verify that the remote directory now exists by listing the contents of its parent directory. This should show the `jobs` directory in the listing.

```
$ deshl list idris/home
...
drwx      32768   Feb 07 2007 01:22:01   jobs
...
```

3. Upload the executable script to the server

You now must upload the executable script, `hello.sh`, from your local machine to the DEISA site where the job will be run. To do this, use the `deshl copy` command:

```
$ deshl copy hello.sh idris/home/jobs/hello.sh
```

4. Make the script executable on the server.

Executable files uploaded using DESHL lose their execute permission; a further step is therefore required to make the file executable. (It is expected that most executables will already exist on the DEISA file system and so this step will not be encountered often.)

Create a file called `chmod.sh` in your exercises directory and add the contents shown below. (Again, you will need to change the value for `SAGA_HostList` to match the site to which you wish to submit jobs.)

```
chmod.sh
#!/bin/bash
#$ SAGA_FileTransfer = file:///bin/chmod#ROOT > chmod.sh
#$ SAGA_HostList = idris
#$ SAGA_JobCmd = chmod.sh
```

The absolute path of the copied file on the remote site must be known.

It is also possible to specify the path in terms of environment variables on the remote system. For example, submitting from a Windows workstation:

```
$ deshl submit chmod.sh u+x $HOME/jobs/hello.sh
```

Submitting from a UNIX workstation (please note that the \ character is required for the path to be evaluated correctly):

```
$ deshl submit chmod.sh u+x \"$HOME/jobs/hello.sh
```

The job submission will return a job identifier similar to “idris%2F957383131”

The status of the job can be checked using `deshl status`:

```
deshl status idris%2F957383131
Job: idris%2F2127398328, has status: Running
```

Once the job has completed, the uploaded executable script should have execute permissions. This can be confirmed by listing the file properties:

```
$ deshl list idris/home/jobs/hello.sh
-rwx      88      Feb 07 2007 01:22:01  hello.sh
```

When `deshl` jobs have completed running, the resources associated with the job such as output to `stdout` and `stderr` remain on the remote server until explicitly fetched to your local workstation. When a job has been fetched, resources used by the job will be freed and the job identifier will become invalid. Subsequent attempts to get information about the job after it has been fetched will fail.

To free resources used by the `chmod` job, fetch the job using the `deshl fetch` command:

```
$ deshl fetch idris%2F957383131
```

5. Submit the job

Now that your script on the remote site has execute permissions, you can submit a job to run it.

```
$ deshl submit hello-submit.sh
```

This returns a job identifier, which we can use to monitor the job's status

6. Get the job status

```
$ deshl status idris%2F957383131
Job: idris%2F957383131, has status: Running
```

You can request more details of the status using the `-f` flag:

```
$ deshl status -f idris%2F957383131

Job: idris%2F1875704394, has status: DoneOk
     ssl://norma2.idris.fr:4433/IDRIS%20ZAHIR
     Name: hello.sh
     DoneOk 06/21 06:00:52
     Running 06/21 05:58:38
```

Once the job has successfully completed, the status will be reported as `DoneOK`.

7. Cleanup the job and retrieve the job output

In your `exercises` directory, create a subdirectory called `output`.

Once the job has completed, the output from the job can now be retrieved and any resources consumed by the job released using the `fetch` command. The `fetch` command allows you to retrieve the job output into a specified directory; for this example you will retrieve into the local directory `output` that you have just created.

```
$ deshl fetch -d output idris%2F957383131
```

This will place two files in the specified directory; one of these is the job's output to standard output, and the other is the job's output to standard error. Look at the files in the output directory to verify this. Fetching the job also frees any resources used by the job.

3.2 Staging in data for a job, staging out results

In this part of the tutorial, you will stage in data required by a job, run the job and then retrieve data produced by the job. The example script in this case will perform a simple concatenate on two specified files and the file containing the joined files will be the final result.

In your `exercises` directory, create files called `catfiles_submit.sh` and `concat.sh`; add the contents as listed below.

```
catfiles-submit.sh

#!/bin/bash
# Test job script for DESHL using SAGA.
#
# SAGA JobDefinition based directives:
#$ SAGA_FileTransfer = file:///jobs/concat.sh#HOME > concat.sh
#$ SAGA_FileTransfer = file:///tutorial/filea#HOME > filea
#$ SAGA_FileTransfer = file:///tutorial/fileb#HOME > fileb
#$ SAGA_FileTransfer = file:///tutorial/filec#HOME < filec
#$ SAGA_HostList = idris
#$ SAGA_JobCmd = concat.sh
```

```
concat.sh
#!/bin/bash

cat filea fileb > filec
```

Again, please note that you will have to change the value of `SAGA_HostList` to specify the site that you are submitting the job to.

Use the `deshl copy` command to import the executable script file, `concat.sh`, to the jobs directory on the remote site and set the execute permissions using `chmod.sh`:

```
$ desh1 copy concat.sh idris/home/jobs/concat.sh
$ desh1 submit chmod.sh u+x $HOME/jobs/concat.sh
$ desh1 list idris/home/jobs/concat.sh
```

As before, check the status of the job and fetch the job once it has completed.

Use the `deshl makeDir` and `deshl copy` commands to create a tutorial directory on the remote host, then copy two files from your local machine into the remote tutorial directory as `filea` and `fileb`. Confirm that the files have been copied using the `deshl list` command.

For example:

```
$ desh1 makeDir idris/home/tutorial
$ desh1 copy localFileA.dat idris/home/tutorial/filea
$ desh1 copy localFileB.dat idris/home/tutorial/fileb
$ desh1 list idris/home/tutorial
```

You can now submit the job as before:

```
$ desh1 submit catfiles-submit.sh
```

You can monitor the job status using the `deshl status` command. When the job has completed, an output data file called `filec` will have been produced in the remote tutorial directory. Confirm that this file exists by listing its properties:

```
$ desh1 list idris/home/tutorial/filec
-rw-   63   Mar 01 2007 03:29:57   filec
```

Export this file to your local machine using the `deshl copy` command:

```
$ desh1 copy idris/home/tutorial/filec filec.dat
```

Inspect `filec.dat` to confirm it contains the concatenated contents of the two original files. Remember to cleanup the job using the `deshl fetch` command.

3.3 Listing available modulefiles at a DEISA site

In this part of the tutorial you will submit a job to list the available modulefiles at a DEISA site. The job will output information about the environment at the DEISA site. You will then retrieve the output from the job.

In your `exercises` directory, create files called `listmodules_submit.sh` and `listmodules.sh`; add the contents as listed below.

listmodules.sh

```
#!/bin/bash
module load deisa
module list
module avail
```

listmodules-submit.sh

```
#!/bin/bash
# Test job script for DESHL using SAGA.
#
# SAGA JobDefinition based directives:
#$ SAGA_FileTransfer = file:///jobs/listmodules.sh#HOME > listmodules.sh
#$ SAGA_HostList = idris
#$ SAGA_JobCmd = listmodules.sh
```

Again, please note that you will have to change the value of `SAGA_HostList` to specify the site that you are submitting the job to.

Use the `deshl copy` command to import the executable script file, `listmodules.sh`, to the `jobs` directory on the remote site and set the execute permissions using `chmod.sh`:

```
$ desh1 copy listmodules.sh idris/home/jobs/listmodules.sh
$ desh1 submit chmod.sh u+x $HOME/jobs/listmodules.sh
$ desh1 list idris/home/jobs/listmodules.sh
```

As before, check the status of the job and fetch the job once it has completed.

You can now submit the job as before:

```
$ desh1 submit listmodules-submit.sh
```

You can monitor the job status using the `deshl status` command. When the job has completed, retrieve the job output using the `fetch` command as before.

```
$ desh1 fetch -d output idris%2F957384927
```

This will create two new files in the output directory, one containing the job's output to stdout and the other containing the job's output to stderr. Open the stderr file (`.err`) using a text editor. The contents of the file should be similar to the following:

```

This script was created and executed by Unicore
UNICORE - start of user output on stderr

Currently Loaded Modulefiles:
 1) mode/64                5) endian/big            9) compilerwrappers/yes
 2) fortraninteger/4      6) c++/8.0              10) deisa
 3) fortranreal/4        7) c/8.0
 4) fortrandouble/8      8) fortran/10.1
----- /usr/local/pub/Modules/modulefiles/init -----
deisa
----- /usr/local/pub/Modules/modulefiles/environment -----
compilerwrappers/no      fortraninteger/4(default)
compilerwrappers/yes(default) fortraninteger/8
endian/big(default)     fortranreal/4(default)
endian/little           fortranreal/8
fortrandouble/16       mode/32
fortrandouble/8(default) mode/64(default)
----- /usr/local/pub/Modules/modulefiles/compilers -----
c/7.0                   c++/8.0(default)       java/1.4(default)
c/8.0(default)         fortran/9.1
c++/7.0                fortran/10.1(default)
----- /usr/local/pub/Modules/modulefiles/libraries -----
blacs/3(default)       fftw/3                  pssl/3(default)
blacssmp/3(default)   hdf5/1.6(default)     psslsmp/3(default)
blas/4(default)       lapack/3.0(default)   pwsmp/6
blassmp/4(default)   mass/4(default)       pwsmp/7(default)
essl/4(default)      nag/20                 scalapack/1.7(default)
esslsmp/4(default)   nag/21(default)       wsmpp/6
fftw/2.1.5(default)  netcdf/3(default)     wsmpp/7(default)
----- /usr/local/pub/Modules/modulefiles/tools -----
emacs/21(default)    omniorb/4.0(default)  tcl/8.4(default)
gmake/3(default)    openssl/3(default)   tk/8.4(default)
hpm/2.5(default)    perl/5.8(default)    totalview/7
nedit/5(default)    python/2.4(default)  totalview/8(default)
----- /usr/local/pub/Modules/modulefiles/applications -----
cpmd/3.9             gopenmol/2.32(default)  lammps/01Oct06(default)
cpmd/3.11(default)  torb/1.22(default)     lammps/12Feb07
cpmd2cube/jan05    torbwsmpp/1.22(default) namd/2.6(default)
cpmd2cube/apr06(default) wien2k/05(default)

UNICORE - end of user output on stderr
UNICORE EXIT STATUS 0 +

```

Appendix I – Certificate Management

A certificate compliant to the EU Grid PMA minimal requirements is required to use the DESHL. Details of how to obtain this certificate vary from country to country, therefore please contact the appropriate certificate issuing authority in your region for details on how to apply for a certificate. For each site that the user wishes to access, the DESHL client requires both the user's certificate and the issuing authority's root certificate to be made available in a directory which is accessible to the DESHL client at runtime (the directory location is set in the DESHL configuration). Both certificates must be X.509 (v3) compliant (DER encoded as base64 with additional header and footer lines). The user's certificate must also be packaged in a PKCS12 bundle with the same password as for the certificate (this is the same as for UNICORE).

Please also see the DEISA Primer:

https://www.deisa.org/userscorner/primer/access_to_grid.php#2.1.3

The public certificate of the CA (Certificate Authority) that signed a user certificate **MUST** be placed in the same directory as the PKCS12 file holding that user certificate and it **MUST** be a '.pem' file.

If you have an X.509 certificate, with the public key in `usercert.pem` and the private key in `userkey.pem`, you can convert it to the PKCS12 format using the `openssl` (<http://www.openssl.org>) tool:

```
$ openssl pkcs12 -export -in usercert.pem -inkey userkey.pem -out  
user.p12 -certfile "CApublicKey-name "user1"
```

First, you will have to type the passphrase that you chose for your original PEM certificate when you requested it to the RA, then a new passphrase for the PKCS12 keystore. OpenSSL is available also for the Windows operating system, visit:

<http://www.openssl.org/related/binaries.html>.

You can also run `openssl` under `cygwin` on Windows, see <http://www.cygwin.com/>.

It is also possible to export a user certificate and private key pair from a web browser in PKCS12 format.

For example in Internet Explorer from '*Tools/Internet Options...*' select the '*Content*' tab then '*Certificates*' button, choose the personal certificate to export and follow the export wizard selecting the PKCS12 format.

In Firefox choose '*Tools/Options...*' select '*Advanced*' then the '*Security*' tab, press the '*View Certificates*' button, and choose which of '*Your Certificates*' to backup then save as a PKCS12 file.